

MTS High-Capacity Modular Chillers

With Marine-Grade Shell-and-Tube Condenser



MTS systems are high-capacity, marine-grade shell-and-tube chiller modules designed for large pleasure yachts and commercial vessels. Optional electric-immersion heating can provide on-board comfort year round.

MTS chillers have a hermetic scroll compressor and a shell-and-tube marine-grade condenser, along with other mechanical and electrical components on a single chassis. Multiple modules can be staged as needed to meet the required load. Up to six modules are supported.

MTS chillers are designed for easy installation in tight spaces. They provide easy front access for repair and maintenance of condenser tubes, heater rods, flow switch, compressor, and replaceable drier cores. Safety measures include high-pressure switch, refrigerant pressure-relief valve, low-pressure switch, flow switch, high-limit switch, and freeze protection.

A filter drier keeps refrigerant oil clean and dry for long compressor life. With 100 percent pump-down capacity, refrigerant circuit repairs can be made without recovering the refrigerant.

The MTS 25-ton (279,000 BTU/hr) chiller is available in 380V and 460V models.

Key Benefits

- Up to six modules can be multiplexed for larger capacities
- Hermetically-sealed compressor
- Marine-grade cupronickel shell-and-tube condenser
- High-pressure switch and pressure-relief valve for safety
- Dual bottom draining liquid connections for optimal performance in choppy seas
- Filter drier keeps refrigerant oil clean and dry for long compressor life
- 100% pump-down capacity for making circuit repairs without recovering the refrigerant
- Optional variable frequency drives smooth out compressor startup power demand

Specifications for MTS High-Capacity Modular Chillers

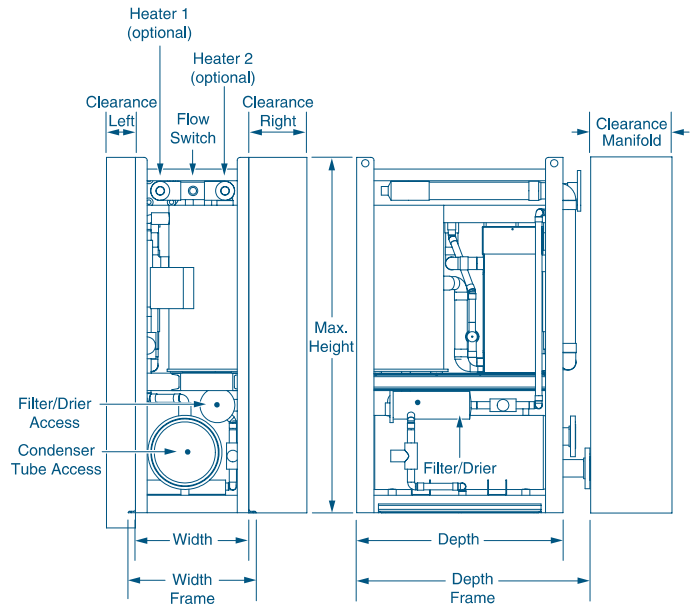
Model	MTS 25-Ton Modular Chiller	
Voltage (V)	380	460
Cycle (Hz)/Phase (Ph)	50/3	60/3
Max. Height (in/mm) ⁽¹⁾	61.2/1555	
Max. Width (in/mm) ^{(1)/(2)}	19.5/496	21.75/553
Max. Depth (in/mm) ^{(1)/(3)}	35.5/902	40.2/1022
Width Frame (in/mm) ⁽¹⁾	21.8/554	19.5/496
Depth Frame (in/mm) ⁽¹⁾	40.2/1022	35.5/902
Clearance Left (in/mm)	5/127	
Clearance Right (in/mm)	10/254	
Clearance Manifold (in/mm)	8/204	

¹ All dimensions ± 0.30 in. (8 mm).

² For staged modules, add a clearance of 5 in. (127 mm) and 10 in. (254 mm), alternately, between modules.

³ Allow 8 in. (203 mm) on water connection side for manifolds without isolation valve, and 14 in. (356 mm) for manifolds with isolation valve.

Dimensions



DOMETIC MARINE DIVISION

2000 N. Andrews Ave. Ext. I Pompano Beach, FL 33069 USA | Tel. 954-973-2477 | Fax: 954-979-4414
www.Dometic.com/Marine | MarineSales@DometicUSA.com

24/7 TECH SUPPORT FOR UNITED STATES & CANADA:

8:00 AM to 5:00 PM Eastern Time: 800-542-2477
 After hours and weekends: 888-440-4494

INTERNATIONAL SALES & SERVICES

Europe & the Middle East: Call +44(0)870-330-6101
 For all other areas visit our website to find your nearest distributor.

