

TOUCH VIEW CONTROL PANEL



- External touch screen control panel for Dolphin Pro range
- Tactile, with Can Bus connection
- You can supervise your charger and your battery bank
- 5 languages
- Instructions menu : temperature, error messages, charging current, charging curve selected, charging phase (boost, absorption, float), power max delivered



12/24V	
General information	
Screen size	round diameter 2,4" - 6,1 cm
LCD Type	a-Si TFT
Color configuration	RGB vertical stripe
Backlight	White LED
Interface	16-bit interface for i80system
Conformity	ROHS
Code	399033

BAT VIEW 2.0 BATTERY MONITOR

- At the touch of a button, you will be able to monitor a host of important information
- Simple to connect
- Automatically detects the input voltage (12 VDC or 24 VDC)
- CanBus SAE J1939 interface
- Flush fitted, diameter Ø 52 mm
- The BAT VIEW 2.0 battery monitor analyses battery voltage, battery efficiency, temperature and capacity on 2 battery banks (by means of an optional second shunt) also the voltage on 2 additional banks



12/24V 10 - 5000 Ah	
Power supply	
Voltage	10-30 VDC
Consumption	10mA approx. (normal mode) 30mA approx. (alarm mode)
Display functions	
Display type	Graphic OLED display 4 lines
Parameter selection	5 way navigation keypad
Parameters displayed	
Batteries 1 & 2	Voltage, Current, Temperature & Capacity
Batteries 3 & 4	Voltage
Alarm functions	
Batteries 1 & 2	Battery undervoltage (adjustable) Battery overvoltage Excessive temperature Low capacity
Batteries 3 & 4	Battery undervoltage (adjustable) Battery overvoltage
Alarm output	Dry loop, 1 inv - 1 Amp max.
Supplied with	
Temperature sensor	1 electric sensor
Shunt	1 shunt 300 Amps/100mV
General information	
Security	Delayed fuse 100 mA on +
Operating temperature	- 10°C to + 50°C
Storage temperature	- 20°C to + 70°C
Convection	Natural
Presentation	Flush mounted Ø 52 mm
Dimensions	70x70x32mm
Weight	< 500g
Connection	2 screw terminals
Code	399 032

WATERPROOF BATTERY CHARGER

AUTOMATIC BATTERY CHARGER WATERPROOF AND SHOCK RESISTANT



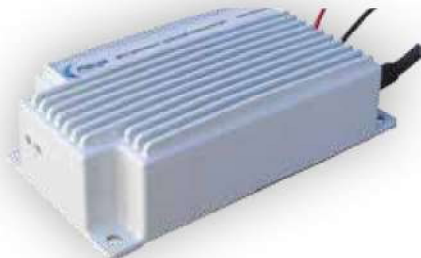
Nothing can damage this charger, not water, hydrocarbons or impurities. The housing is aluminium and the electronics are coated in resin.

Thermal protection

This battery charger can even be used in warmer areas of the boat like the machine room.

Automatic charger with 3 charging curves

The battery is protected against all overloads and can remain permanently connected (operating in floating).



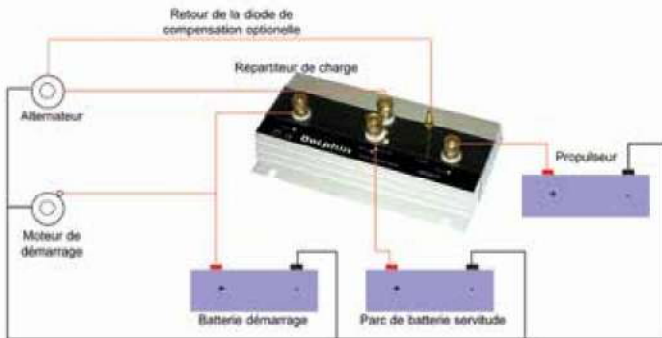
	12V	
	7A	17A
Battery capacity	18 - 80 Ah	20 - 180 Ah
Input		
Input voltage	170 - 270 VAC	
Input frequency	40 - 60 Hz	
Output		
Number of outputs	1	
Output voltage	14.4 / 13.8 VDC	
Charging curve	IUoU	
Fuse (supplied)	6.3 / 10 Amps	6.3 / 20 Amps
Protection		
Short circuit	Yes	
Reverse polarity	Yes (fuse)	
Temperature fault	Signalled by flashing LED	
General		
Operating temperature	-30 à +55°C	
Ventilation	Natural	
Humidity	Up to 100%	
Housing		
Protection level	IP65 (Electronics immersed in resin)	
Material	Aluminium casing	
Dimensions	155 x 80 x 43 mm	192 x 98 x 47 mm
Weight	1.1 Kg	1.4 Kg
Wiring		
Gauge	3 x 0.75 mm ² x 1,5m long with EU rated plugs 2P+T	
Battery cable	1 x 1.5 mm ² x 1,5m long	
EMC		
	EN 60335-1 / EN 60335-2-29 / EN 55014 / EN 60555-2 / EN 60555-3 EN 55022 Cl.B / EN 61000-3-2 / EN 61000-3-3 / EN 61000-4-2 EN 61000-4-11 / e-marking 95-54-EG	
Code	498000	498100

DOLPHIN DIODE BATTERY ISOLATOR

Schottky diodes

The Dolphin battery isolators feature a low voltage drop thanks to the use of Schottky diodes

At low current the voltage drop is approximately 0,3 V and at the rated output approximately 0,45



	DB70-2C	DB90-3C	DB120-2C	DB120-3C	DB160-2C	DB160-3C
General						
Max. Charge Current	50 A	70 A	100 A	100 A	130 A	130 A
Max. Alternator Current	70 A	90 A	120 A	120 A	160 A	160 A
Input	1	1	1	1	1	1
Outputs	2	3	2	3	2	3
Connection	M6	M8	M8	M8	M8	M8
Diode connection	M4	M4	M4	M4	M4	M4
Weight	0,6 Kg	1,2 Kg	0,8 Kg	1,2 Kg	1,2 Kg	1,5 Kg
Dimensions HxWxL	60 x 120 x 80mm	60 x 120 x 150mm	60 x 120 x 100mm	60 x 120 x 150mm	60 x 120 x 150mm	60 x 120 x 200mm
Code	512000	512001	512002	512003	512004	512005

