

# Marine Fuel Filtration

## 400 Series

Marine 400 Series spin-on fuel filter/water separators are available in 4 sizes to fit any engine compartment. 400 Series mounting heads feature 4 ports (2 inlets and 2 outlets), a unitized mounting bracket for mounting versatility and a built-in, hand operated fuel priming pump to simplify servicing and repriming procedures.

Also featured on these assemblies are Aquabloc®II water repelling elements that remove sediment down to 10 micron, a vent plug to remove trapped air and a metal water and sediment collection bowl. Experienced sailors trust their engines, their livelihood, and even their lives to Racor. Shouldn't you?



445MAM10



460MAM10



490MAM10



4120MAM10



**Parker Hannifin Corporation**  
Racor Division, PO Box 3208  
Modesto, CA 95354 USA  
Phone: 800.344.3286  
Fax: 209.529.3278  
E-mail: [racor@parker.com](mailto:racor@parker.com)  
[www.parker.com/racor](http://www.parker.com/racor)



# Marine Fuel Filtration

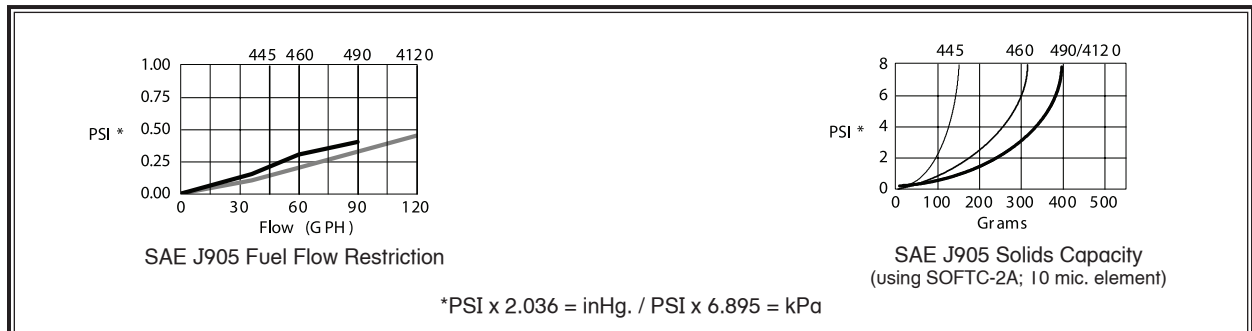
## 400 Series



Specifications	445MAM10	460MAM10	490MAM10	4120MAM10
<b>Maximum Flow Rate</b>	45 GPH (170 LPH)	60 GPH (227 LPH)	90 GPH (341 LPH)	120 GPH (454 LPH)
<b>Port Size</b>	3/8" NPTF	3/8" NPTF	3/8" NPTF	3/4" UNF
<b>Number of Ports:</b> Inlet Outlet	2 2	2 2	2 2	2 2
<b>Replacement Element</b>	S3204TUL	S3211TUL	S3201TUL	S3201TUL
<b>Center Threads</b>	1"-14	1"-14	1"-14	1"-14
<b>Height</b>	9.4 in. (23.9 cm)	10.8 in. (27.4 cm)	12.8 in. (32.5 cm)	12.8 in. (32.5 cm)
<b>Width</b>	4.5 in. (11.4 cm)	4.5 in. (11.4 cm)	4.5 in. (11.4 cm)	4.5 in. (11.4 cm)
<b>Depth</b>	4.8 in. (12.2 cm)	4.8 in. (12.2 cm)	4.8 in. (12.2 cm)	4.8 in. (12.2 cm)
<b>Weight</b>	2.9 lb (1.3 kg)	3.1 lb (1.4 kg)	3.3 lb (1.5 kg)	3.3 lb (1.5 kg)
<b>Clean Pressure Drop</b>	0.2 PSI (1.2 kPa)	0.3 PSI (2.1 kPa)	0.4 PSI (2.4 kPa)	0.5 PSI (3.1 kPa)
<b>Max. Operating Pressure</b>	15 PSI (103 kPa)	15 PSI (103 kPa)	15 PSI (103 kPa)	15 PSI (103 kPa)
<b>H<sub>2</sub>O Removal Efficiency</b>	99%	99%	99%	99%
<b>Bowl Capacity</b>	2.0 oz (58 ml)	2.0 oz (58 ml)	2.0 oz (58 ml)	2.0 oz (58 ml)
<b>Operating Temperature</b>	-40° to +255°F (-40° to +121°C)			

## Test Data

(Test results are from controlled laboratory testing. Field results may vary.)



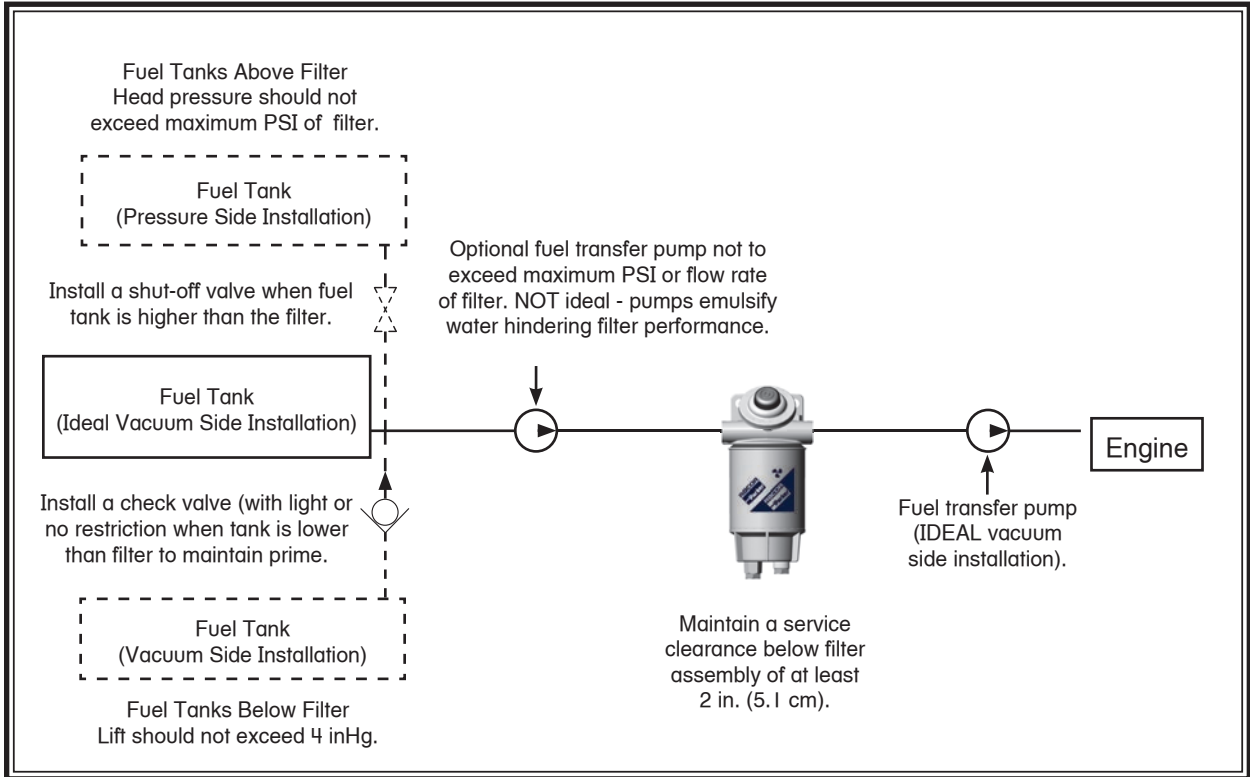
**RACOR**

Technical Support:  
800.344.3286 ext. 7555  
racortech@parker.com



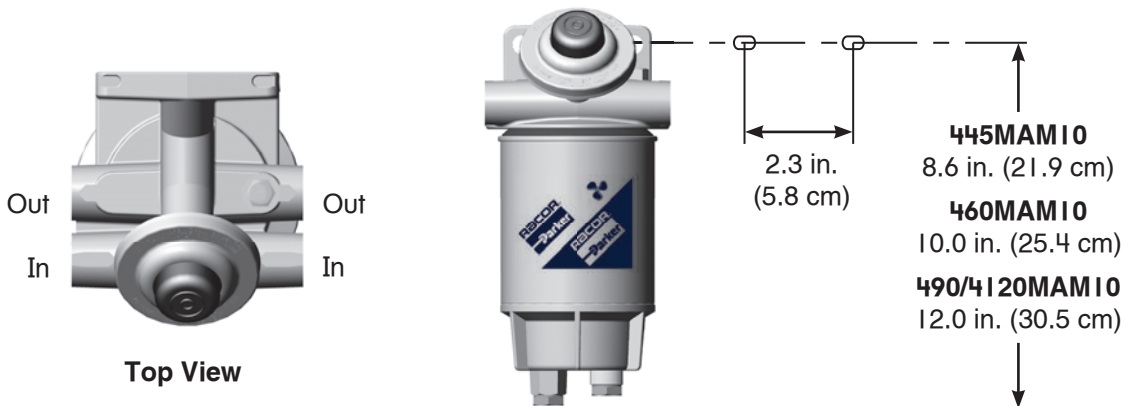
# Marine Fuel Filtration

## 400 Series Installation Diagram



Installation diagram applies to all 400 Series filters. Model 445MAM10 shown above. Racor offers hose and fittings to complete this installation. See Marine Accessories.

## Mounting Information



# Marine Fuel Filtration

## 400 Series

### Replacement Parts

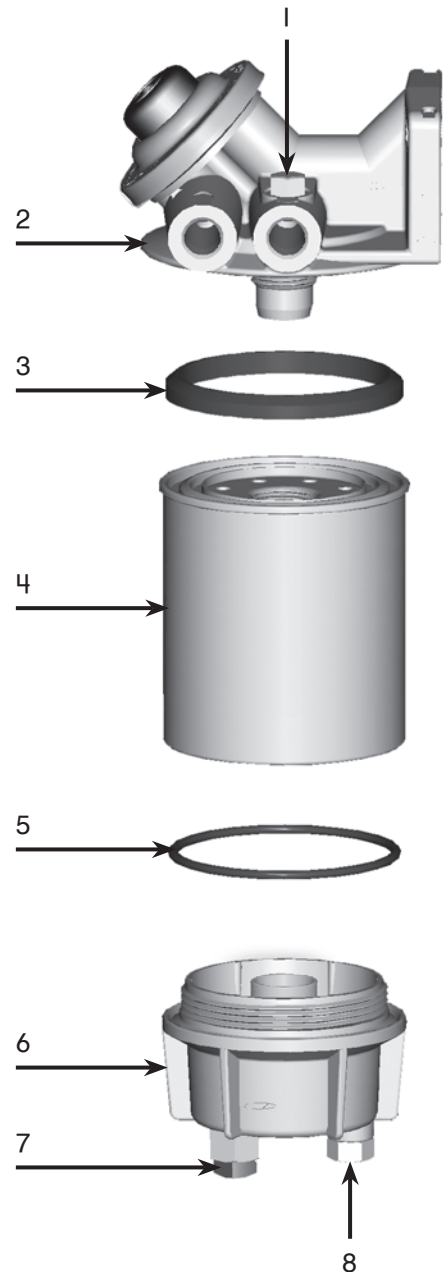
445MAM10, 460MAM10,  
490MAM10 and 4120MAM10

- | Part Number  | Description                       |
|--|-----------------------------------|
| 1. <b>RK10110</b>  | Metal Vent Plug Kit               |
| 2. Mounting Head Kits (includes primer pump & #'s 1 & 3) with (3/8" NPTF ports) for 445MAM10, 460MAM10, 490MAM10 |                                   |
| <b>RK22425</b>   |                                   |
| <b>RK22270</b>   | 4120MAM (3/4" UNF ports)          |
| 3. <b>RK22061</b>  | Element Gasket Kit                |
| 4. Replacement Elements 10 micron (includes #'s 3 and 5)   |                                   |
| <b>S3204TUL</b>  | For 445MAM10                      |
| <b>S3211TUL</b>  | For 460MAM10                      |
| <b>S3201TUL</b>  | For 490MAM10                      |
| <b>S3201TUL</b>  | For 4120MAM10                     |
| 5. <b>RK30076</b>  | Bowl O-ring Kit                   |
| 6. <b>RK30495</b>  | Metal Bowl Kit (includes #'s 5-8) |
| 7. <b>918-N4</b>   | Steel Plug (1/4" NPT)             |
| 8. <b>RK20022</b>  | Metal Plug Kit (1/2"-20 UNF)      |

Additional Parts (not shown)

- |                |                       |
|----------------|-----------------------|
| <b>01SP-6S</b> | Metal Plug (3/8" NPT) |
|----------------|-----------------------|

Applies to  
all models.



**RACOR**

Technical Support:  
800.344.3286 ext. 7555  
racortech@parker.com