

# Coral Sea™

## Never underestimate your fresh water needs

Sea Recovery creates the perfect watermaker for large yachts by combining industrial-strength production with space saving designs. Coral Sea systems are not only installed in luxury yachts, but are also regularly found on oil rigs and commercial vessels around the world. The system's durable construction is the reason why it easily crosses over to both industries. The Coral Sea is also user friendly, featuring electronic monitoring, an LCD touchscreen, and the latest in watermaking technology.

\*Please refer to Sea Recovery's commercial brochure for larger systems.



### Coral Sea Key Features

- Large production capacities
- LCD touchscreen controls
- Lightweight aluminum design
- Safety sensors



Category | Mega Yachts (over 80 ft / 24 m)

### Rugged and reliable operation

The Coral Sea uses industrial PLC that are specifically designed to perform heavy duty operations. All functions are displayed on the LCD touch screen and/or remote, allowing users to monitor and control the system from any location on the boat. With the Coral Sea, boaters are able produce water at any time and any place.

### Functions that ensure your safety

The Coral Sea is one of the easiest and safest industrial grade watermakers to own. It features automatic operation and safety sensors, that when triggered, automatically shut down the system. To ensure safe operation, the Coral Sea will shut down when:

- pre-filter maintenance is required
- operating pressure limit is exceeded

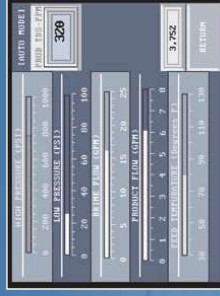


Photo courtesy of Westport Yachts



The Coral Sea's electronic meters also monitor important functions:

- fresh water flow
- brine discharge flow
- product water flow

### Convenient configuration and design

Sea Recovery's membrane technology allows our watermakers to maximize the most space per gallon than any other systems on the market. The Coral Sea can produce up to 280 gallons an hour, and will fit in any large yacht with modular, horizontal, and vertical system configurations.

CORAL SEA PT17118

## Specifications - Coral Sea

\* For general system specifications, refer to page 22

Model #	Config.	Vessel Size	Production / hr	Production / 24hr	Modular weight	Vertical weight	Horizontal weight
2800	Ver./Hor./Mod.	3" Membrane	117 gal / 442 lt	2,800 gal / 10,589 lt	425 lbs / 193 kg	473 lbs / 215 kg	473 lbs / 215 kg
3600	Ver./Hor./Mod.	3" Membrane	150 gal / 568 lt	3,600 gal / 13,627 lt	435 lbs / 197 kg	485 lbs / 220 kg	485 lbs / 220 kg
4200	Ver./Hor.	4" Membrane	175 gal / 662 lt	4,200 gal / 15,899 lt	700 lbs / 318 kg	750 lbs / 340 kg	750 lbs / 340 kg
5200	Ver./Hor.	4" Membrane	217 gal / 820 lt	5,200 gal / 19,684 lt	750 lbs / 340 kg	800 lbs / 364 kg	800 lbs / 364 kg
6200	Hor.	4" Membrane	258 gal / 976 lt	6,200 gal / 23,469 lt	800 lbs / 364 kg	850 lbs / 386 kg	850 lbs / 386 kg
6800	Hor.	4" Membrane	283 gal / 1,073 lt	6,800 gal / 25,741 lt	850 lbs / 386 kg	900 lbs / 409 kg	900 lbs / 409 kg

System Model	Phase	Pump Motor	Voltage VAC	Hz	Normal Operating Amps	Start Up Current
Coral Sea 2800 & 3600	Three	Booster / High-Pressure	220 / 380	50	220 / 380	220 / 380
		Booster / High-Pressure	208 / 230 / 460	50	208 / 230 / 460	96 / 43
	Single	Booster / High-Pressure	220 / 230	60	220 / 230	208 / 230 / 460 54 / 48 / 27
Coral Sea 4200, 5200, 6200 & 6800	Three	Booster / High-Pressure	220 / 380	50	220 / 380	220 / 380
		Booster / High-Pressure	208 / 230 / 460	60	208 / 230 / 460	146 / 64
	Single	Booster / High-Pressure	220 / 230	60	220 / 230	208 / 230 / 460 130 / 116.8 / 58.4

Amperage Rating of Circuit Breaker	Coral Sea 2800 & 3600	Coral Sea 2800 & 3600	Coral Sea 4200 - 6800	Coral Sea 4200 - 6800
AC Voltage	220 / 230	208 / 230 / 460	220 / 380	208 / 230 / 460
Cycles	220 / 230	220 / 230	220 / 230	220 / 230
Phase	Single	Three	Three	Three
Circuit Breaker Amp	50 / 40	40 / 25 / 20	60 / 35	60 / 40 / 30

External Installation Water Connections	Feed Inlet	Clean Inlet	Brine Discharge	Clean Return	Product
2800 & 3600 ANSI Threaded Flange	3/4"	3/4"	3/4"	3/4"	1/2"
4200, 5200, 6200 & 6800 ANSI Threaded Flange	1"	1"	1"	1"	1/2"

CORAL SEA SPECIFICATIONS P19

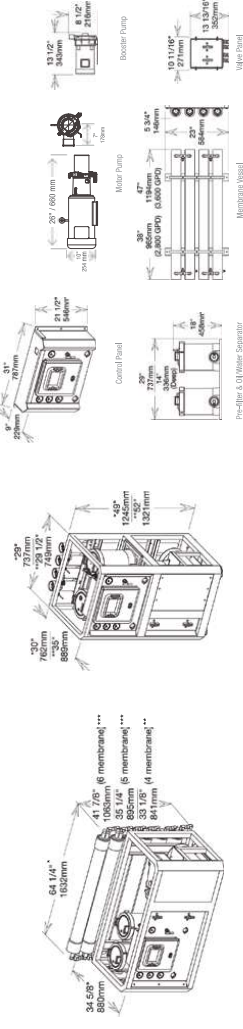
## Dimensions

### Coral Sea™

HORIZONTAL

VERTICAL

MODULAR



- \* 3" Membrane Vessels  
2800 to 3600 GPD • 2800/3H, 3600/3H
- \*\* 4" Membrane Vessels  
4200 to 6800 GPD • 4200/4H, 5200/4H, 6200/4H, 6800/4H
- \*\*\* 5 and 6 piece membrane for 4" Coral Sea Horizontal  
6200 and 6800 only

- \* 3" Membrane Vessels  
2800 to 3600 GPD • 2800/3M, 3600/3M

## Coral Sea Accessories



**UV Sterilizer**  
The final process where 99.99% of the organisms are sterilized.



**Fresh Water Flush**  
Directly flushes the membranes by rinsing them with fresh water.



**Multi-Media Filter**  
Traps suspended solids larger than .50 microns for additional protection for the system's pre-filters, extending pre-filter element life.



**Remote Control Touch Pad Unit**  
That allows for monitoring and supervision of your watermaker.



**pH Neutralizer**  
Provides pH neutralization of reverse osmosis system product water.

CORAL SEA DIMENSIONS / ACCESSORIES P20

\* Refer to your owner's manual or visit [www.searecovery.com](http://www.searecovery.com) for dimensions